

A woman is the central figure, her body and face covered in vibrant blue body paint. She wears a blue mesh veil that she holds up to her face with both hands, partially obscuring her eyes. Her hair is also painted blue. She is wearing a blue, patterned, sleeveless top with gold jewelry on her shoulders. The background is dark, making the blue paint stand out.

Galerie l' Atelier
Nicolas Auvray

ERIC
CECCARINI

THE PAINTERS
PROJECT

Document, images and Text ©Galerie l'Atelier 2021
Photographs ©Eric Ceccarini
All right reserved

Galerie l'Atelier + Fremin Gallery
New York - Paris- Greenwich
www.galerielatelier.com / contact@galerielatelier.com
+ 1 917 340 3639

520 West 23rd Street, New York, NY, 10011
23 Lewis Street, Greenwich, CT, 06830

ERIC CECCARINI **THE PAINTERS PROJECT**

A meeting between a painter, a model and the photographer. . .

Extensive, both in time and scope; ThePainters Project is an ongoing collection of collaborations with painters to whom Eric offers as a canvas some of the very best models he has enjoyed working with during his career.

For a number of these artists the project offers them a step in the dark, an escape into unknown territory. They must settle into a new environment with unfamiliar light, unusual shadows and highlights and a canvas that is not only three dimensional but alive, breathing and sentient. Movements and poses influence their strokes, they must discover, adapt and ultimately tame this canvas with their brush. Together, the body, the pose, and the art become one for a brief moment.

To blend the often distinct viewpoints of different disciplines and work together; to mix various instruments, tools and angles is an uncommon, yet extremely rewarding and exciting approach, but also contrary to the eternal solitude of the artist, a commonly echoed mantra in the art sphere.

This unorthodox partnership gives birth to wonderful and often surprising creations. Magic succeeds when the ephemeral and volatile nature of paint on the human skin is forever captured through the lens and immortalised onto the image.

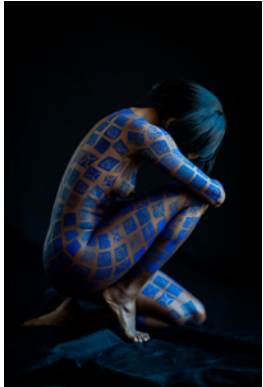
More than hundred meetings have already taken place with artists from the UK, Uruguay, Mauritius, Belgium, The Netherlands, Spain, Italy, France, Switzerland, the US, China, Venezuela, Russia and many other countries all across the globe. Erik is a Belgian artist born in 1965. he gained a degree in photography from infac, Brussels in 1987. Since then he has been a fashion photographer working with many of the top houses.

For "PAINTERS", Eric collaborates with a different painter for each photograph. More than 100 of them have been invited throughout Europe and the other continents. The artist paints the model in their own style, while Eric searches for attitudes, then he photographs the result. In this way, the Painters series represents a fusion of two artistic visions – something that's not always easy to achieve, yet this series epitomizes a sense of cohesion and dynamic synchronicity.

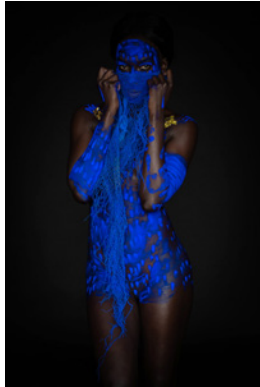
In his artistic works, he captures women's essence and soul, transcending mere physical representation.

Document and Texts ©Galerie l'Atelier 2022
All Photographs ©Eric Ceccarini
All right reserved

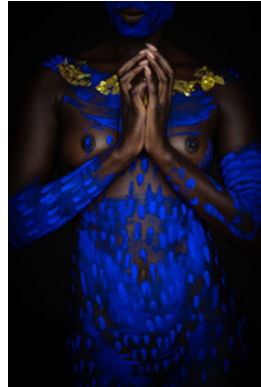
Index



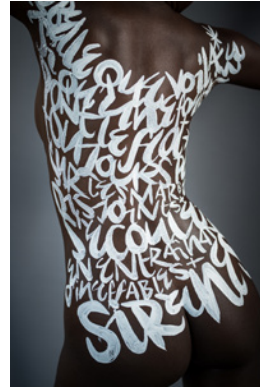
Edmundo Solari 06



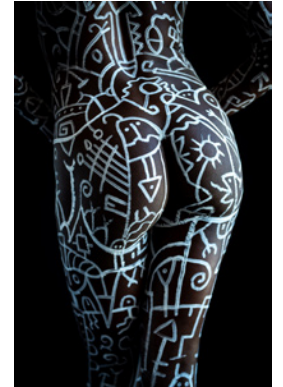
Etiyé II



Etiyé I2



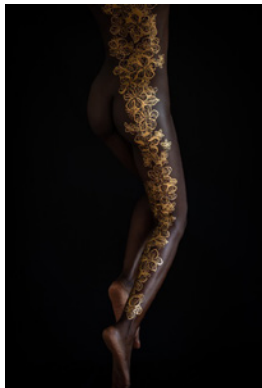
Denis Meyers Maurice 03



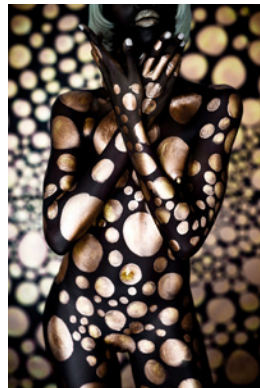
Edmundo Solari 03



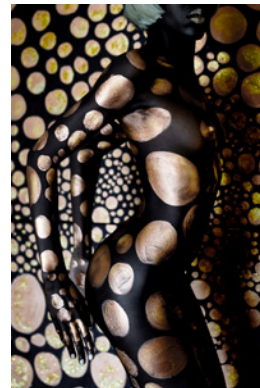
Alvari 01



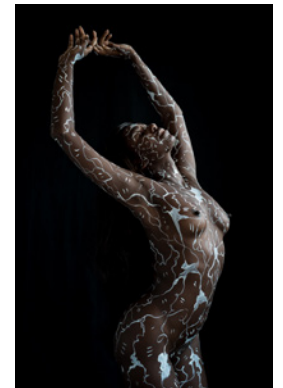
Arigraphicart 01



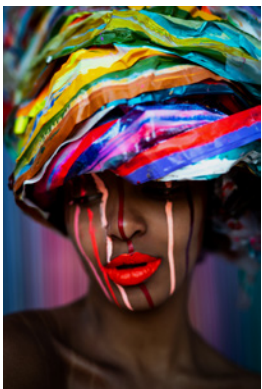
Brigitte Nataf 03



Brigitte Nataf 02



Javier Ens 03



Jacqueline Bozon 02



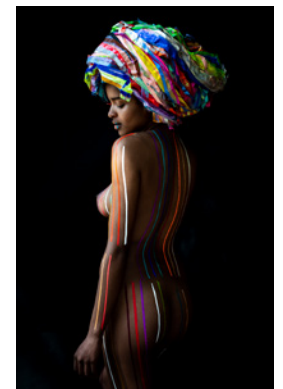
Lina Redford 01



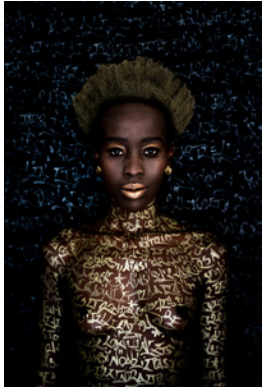
Lina Redford 02



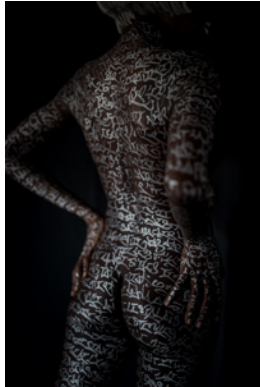
Lina Redford 03



Jacqueline Bozon 03



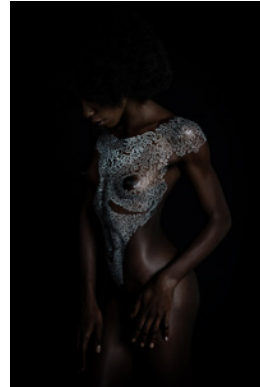
Nutsy 01



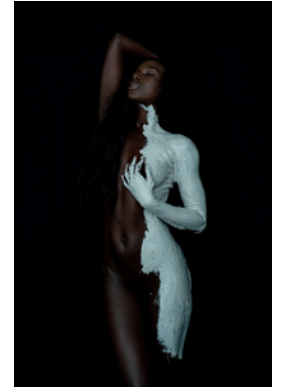
Nutsy 02



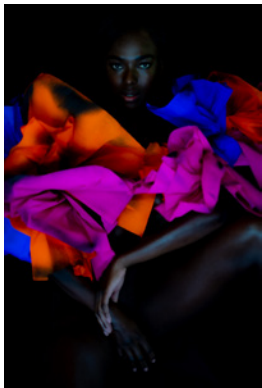
Mathilde Lachal 01



Mimi Love 02



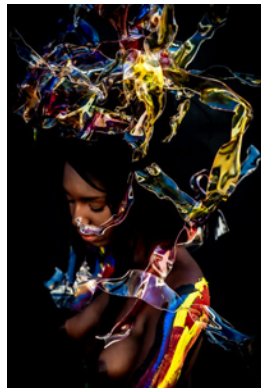
Tom Frantze 02



Patricia Sartori 08



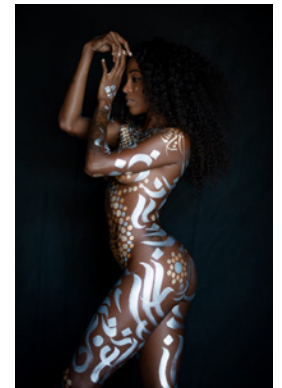
Patricia Sartori 09



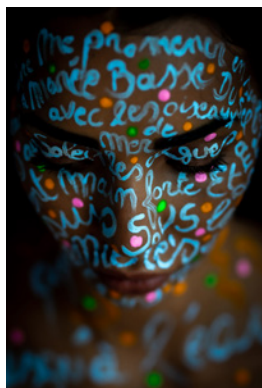
Laura Alunni 02



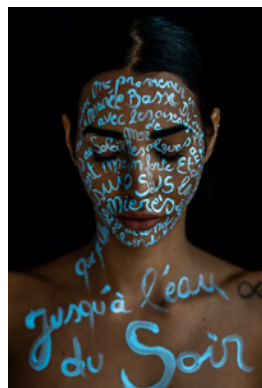
Javier Ens 04



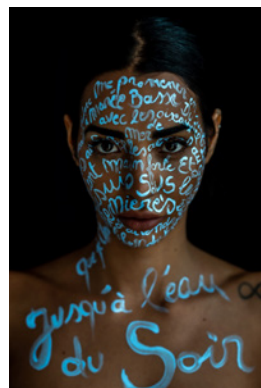
Un-named



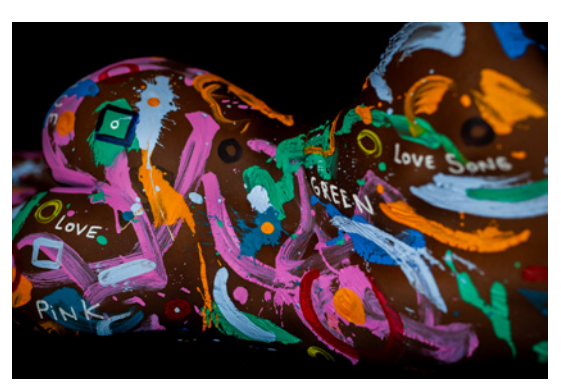
C.de Fierlant 05



C.de Fierlant 06



C.de Fierlant 07



C.de Fierlant 04 (Love Song)

Eric Ceccarini: The Painters Project

Galerie l'Atelier



Ellin Pollack 02



Ellin Pollack 03



Ellin Pollack 04



Evert 01



Gael Froget 04



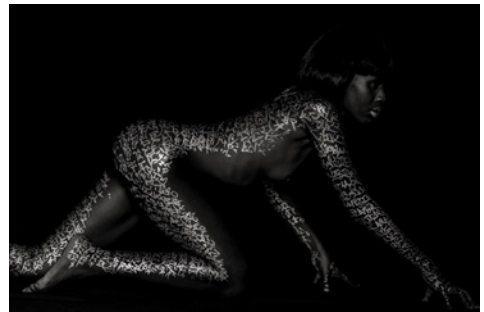
Krasimir Boshev 04



Patricia Sartori 11



Denis Meyers S01



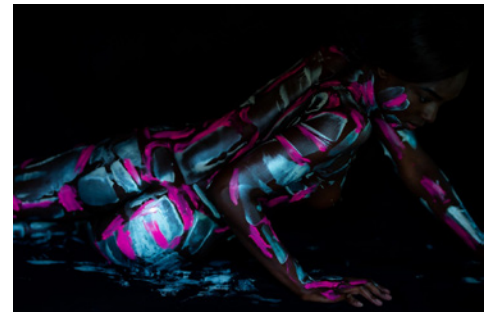
Nutsy 05



Marie Sulac 07



Helen Roeten 01



Patricia Sartori 12

Galerie l'Atelier- Nicolas Auvray- - New York - Greenwich CT - Paris
galerielatelier.com / contact@galerielatelier.com / + 1 917 340 3639 (USA)
Gallery: 520 West 23rd Street, Chelsea, New York, | 23 Lewis Street , Greenwich CT

NEW ADDITIONS TO THE US CATALOG
2022-2023



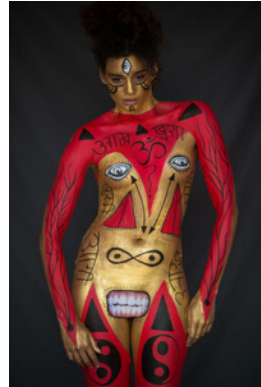
Javier Ens 02



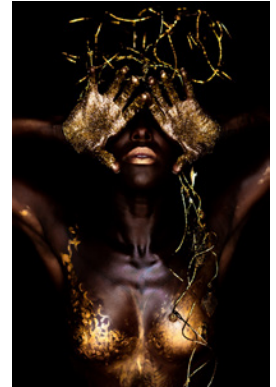
ophie Mercier 02



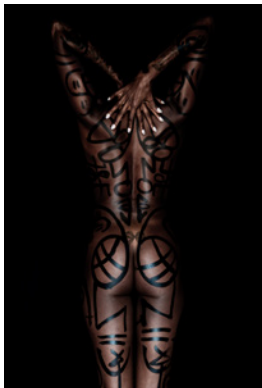
Marilu Cattaneo 01



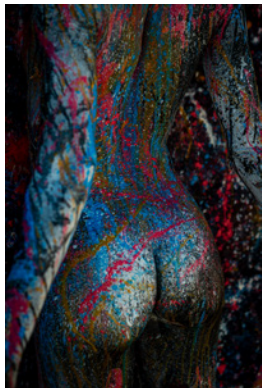
Violeta Galera 001



Sylvia Rainquez 04



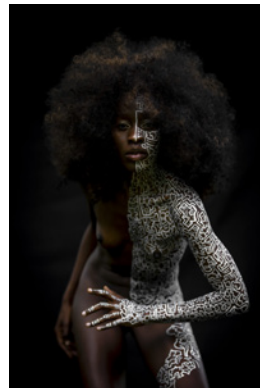
Philip Wittman 02



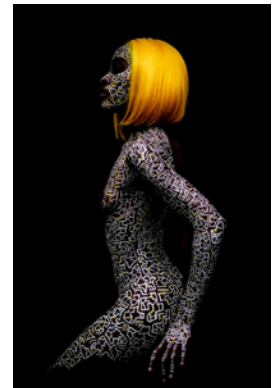
Toby Mulligan D4 01



Ileana Mariotto



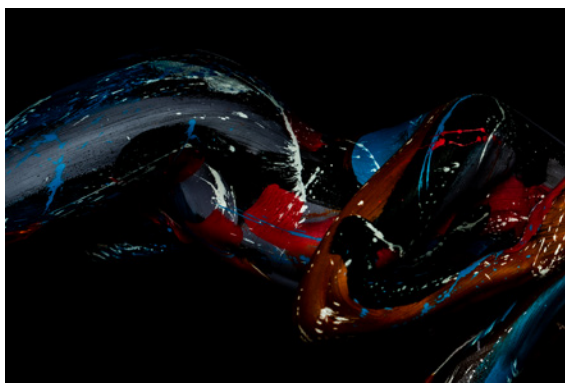
Brigitte Nataf 02



Lana-Arma-01



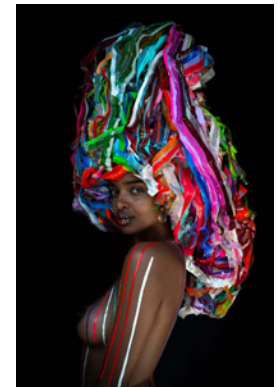
Li Ramet 03



Toby Mulligan D2 01



Toby Mulligan D1 06



Jacqeline Bozon 04

NEW WORK CATALOG 2023



JAVIER ENS 02

44" x 30" Edition of 6 | 65" x 43" Edition of 9 | 86" x 59" Edition of 3

Archival Print mounted to aluminum and laminated

Set in a Black float Frame or Museum Shadow Box

Galerie l'Atelier- Nicolas Auvray- - New York - Greenwich CT - Paris
galerielatelier.com / contact@galerielatelier.com / + 1 917 340 3639 (USA)
Gallery: 520 West 23rd Street, Chelsea, New York, | 23 Lewis Street , Greenwich CT



SOPHIE MERCIER 02

44" x 30" Edition of 6 | 65" x 43" Edition of 9 | 86" x 59" Edition of 3

Archival Print mounted to aluminum and laminated

Set in a Black float Frame or Museum Shadow Box

Galerie l'Atelier- Nicolas Auvray- - New York - Greenwich CT - Paris
galerielatelier.com / contact@galerielatelier.com / + 1 917 340 3639 (USA)
Gallery: 520 West 23rd Street, Chelsea, New York, | 23 Lewis Street , Greenwich CT



MARILU CATTANEO 01

44" x 30" Edition of 6 | 65" x 43" Edition of 9 | 86" x 59" Edition of 3

Archival Print mounted to aluminum and laminated

Set in a Black float Frame or Museum Shadow Box

Galerie l'Atelier- Nicolas Auvray- - New York - Greenwich CT - Paris
galerielatelier.com / contact@galerielatelier.com / + 1 917 340 3639 (USA)
Gallery: 520 West 23rd Street, Chelsea, New York, | 23 Lewis Street , Greenwich CT



ILEANA MARIOTTO 02

44" x 30" Edition of 6 | 65" x 43" Edition of 9 | 86" x 59" Edition of 3

Archival Print mounted to aluminum and laminated

Set in a Black float Frame or Museum Shadow Box

Galerie l'Atelier- Nicolas Auvray- - New York - Greenwich CT - Paris
galerielatelier.com / contact@galerielatelier.com / + 1 917 340 3639 (USA)
Gallery: 520 West 23rd Street, Chelsea, New York, | 23 Lewis Street , Greenwich CT



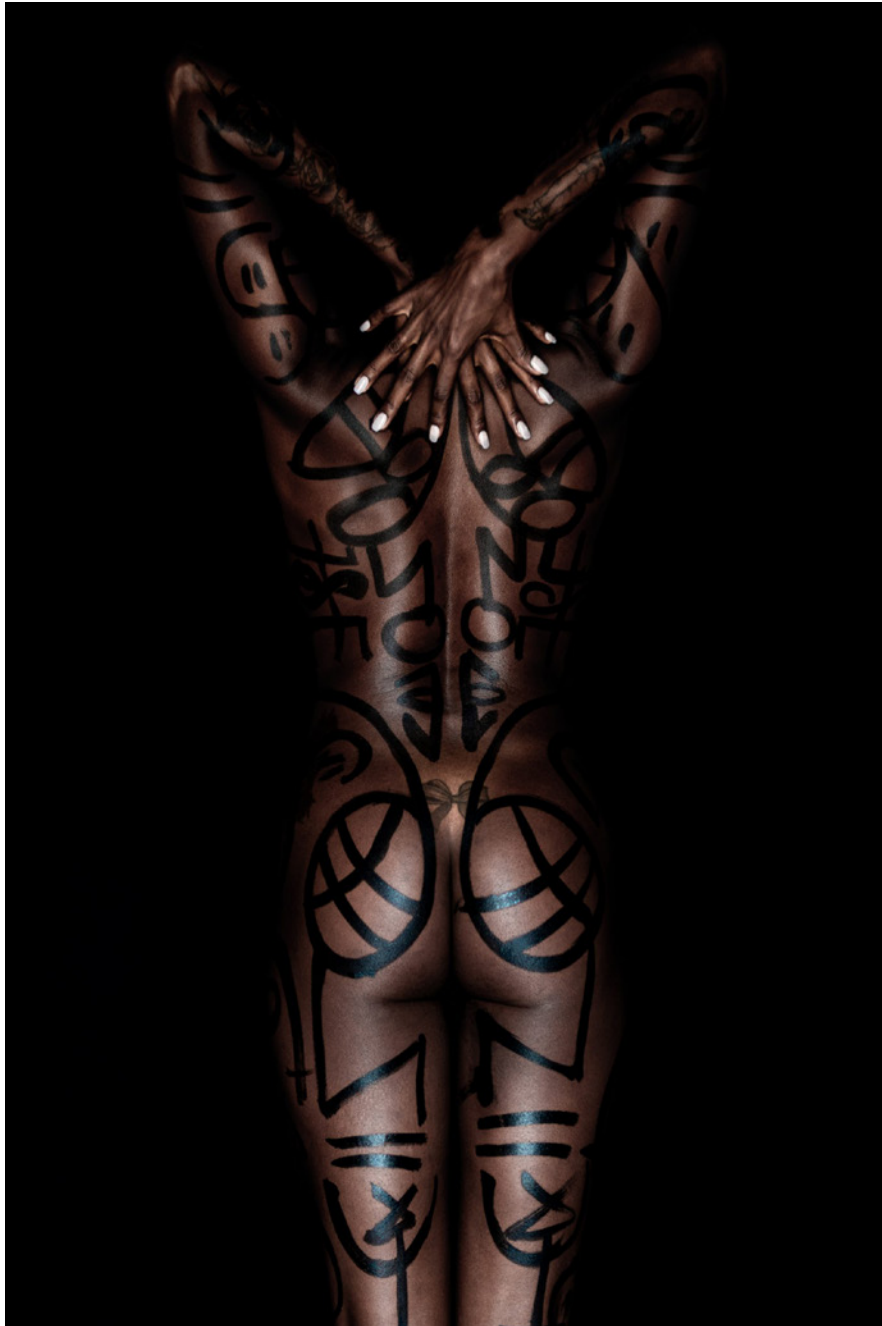
SYLVIA RAINGUEZ 04

44" x 30" Edition of 6 | 65" x 43" Edition of 9 | 86" x 59" Edition of 3

Archival Print mounted to aluminum and laminated

Set in a Black float Frame or Museum Shadow Box

Galerie l'Atelier- Nicolas Auvray- - New York - Greenwich CT - Paris
galerielatelier.com / contact@galerielatelier.com / + 1 917 340 3639 (USA)
Gallery: 520 West 23rd Street, Chelsea, New York, | 23 Lewis Street , Greenwich CT



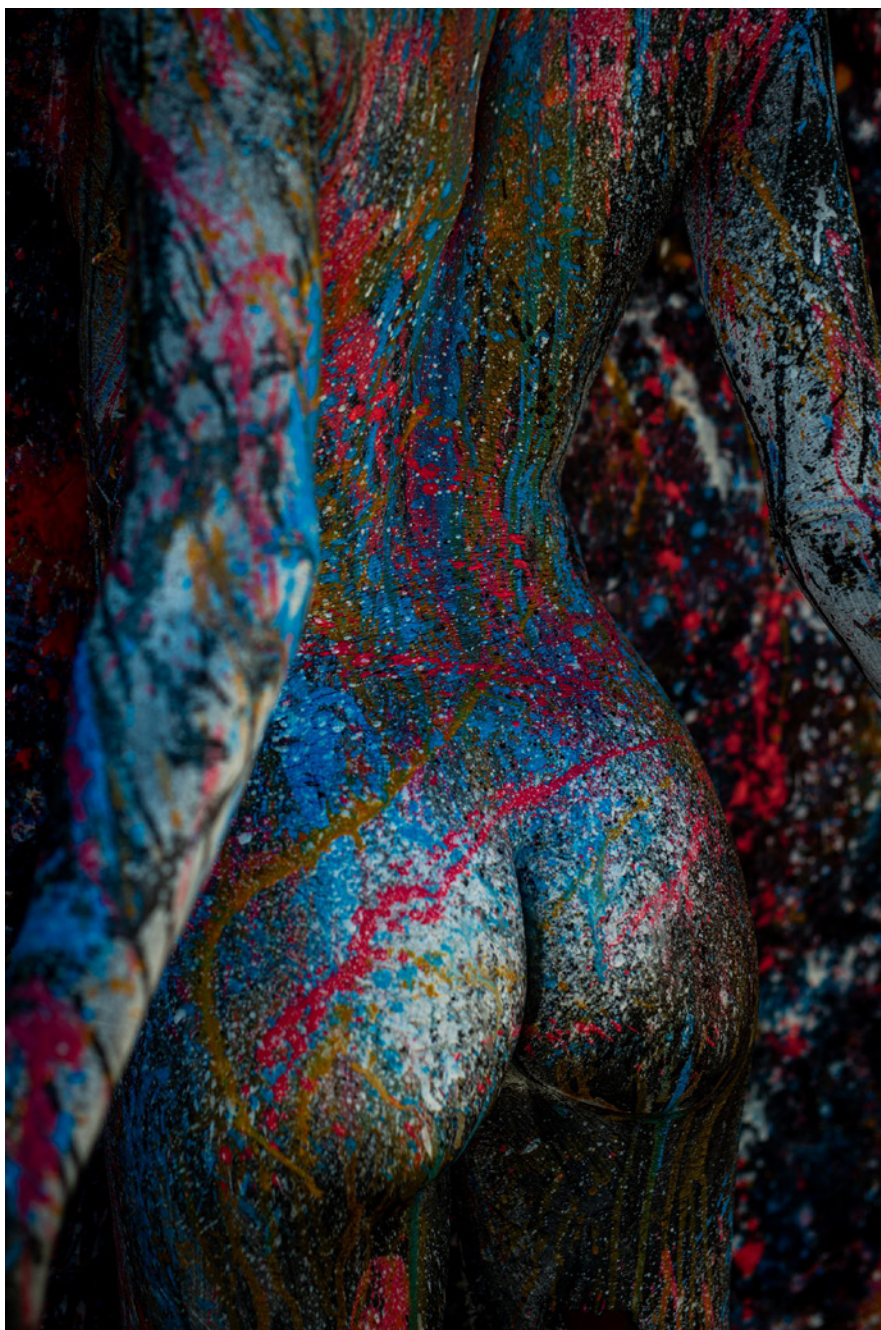
PHILIP WITTMAN 02

44" x 30" Edition of 6 | 65" x 43" Edition of 9 | 86" x 59" Edition of 3

Archival Print mounted to aluminum and laminated

Set in a Black float Frame or Museum Shadow Box

Galerie l'Atelier- Nicolas Auvray- - New York - Greenwich CT - Paris
galerielatelier.com / contact@galerielatelier.com / + 1 917 340 3639 (USA)
Gallery: 520 West 23rd Street, Chelsea, New York, | 23 Lewis Street , Greenwich CT



TOBY MULLIGAN D4 01

44" x 30" Edition of 6 | 65" x 43" Edition of 9 | 86" x 59" Edition of 3

Archival Print mounted to aluminum and laminated
Set in a Black float Frame or Museum Shadow Box

Galerie l'Atelier- Nicolas Auvray- - New York - Greenwich CT - Paris
galerielatelier.com / contact@galerielatelier.com / + 1 917 340 3639 (USA)
Gallery: 520 West 23rd Street, Chelsea, New York, | 23 Lewis Street , Greenwich CT



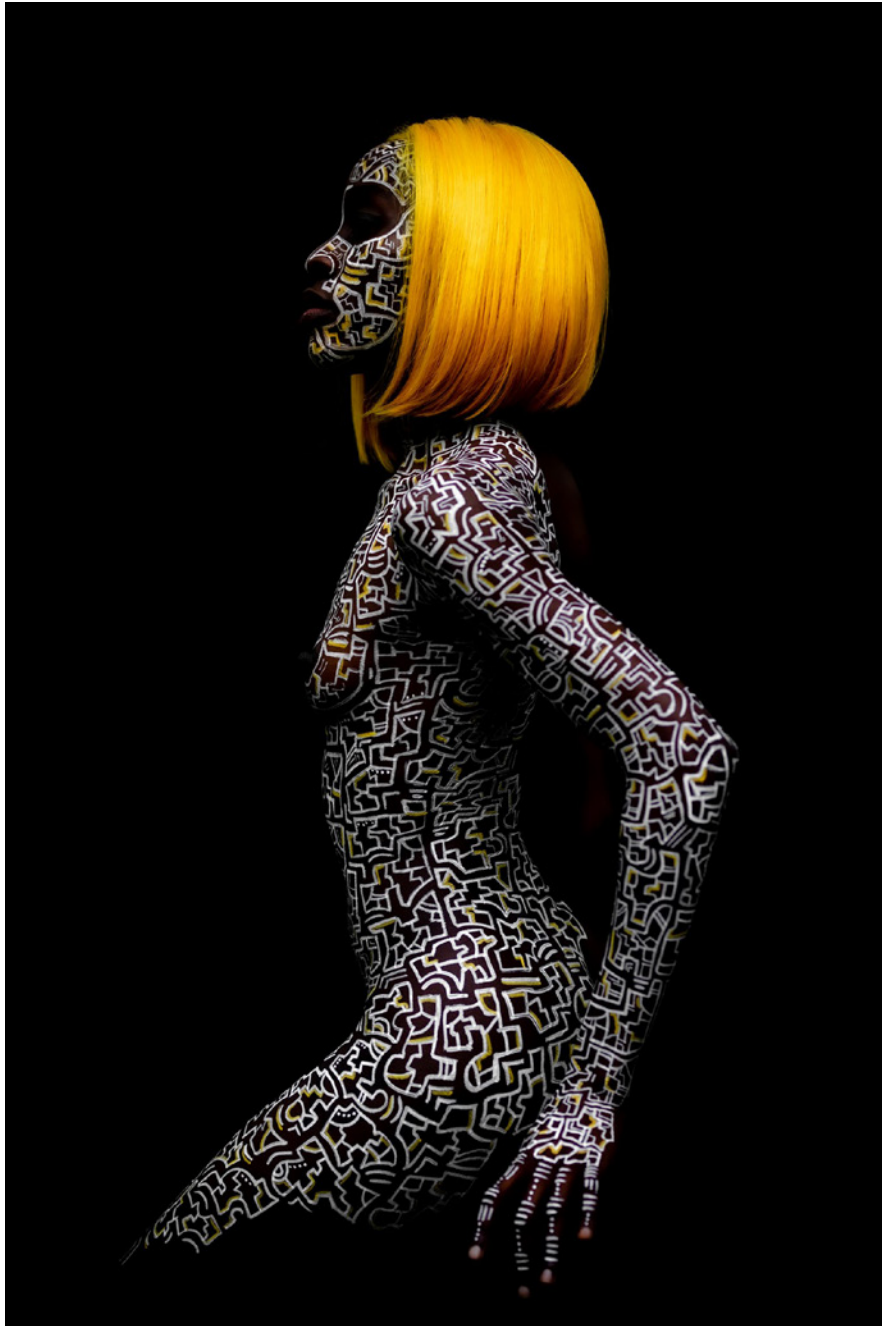
LANA ARMA 01

44" x 30" Edition of 6 | 65" x 43" Edition of 9 | 86" x 59" Edition of 3

Archival Print mounted to aluminum and laminated

Set in a Black float Frame or Museum Shadow Box

Galerie l'Atelier- Nicolas Auvray- - New York - Greenwich CT - Paris
galerielatelier.com / contact@galerielatelier.com / + 1 917 340 3639 (USA)
Gallery: 520 West 23rd Street, Chelsea, New York, | 23 Lewis Street , Greenwich CT



SYLVIA RAINGUEZ 04

44" x 30" Edition of 6 | 65" x 43" Edition of 9 | 86" x 59" Edition of 3

Archival Print mounted to aluminum and laminated

Set in a Black float Frame or Museum Shadow Box

Galerie l'Atelier- Nicolas Auvray- - New York - Greenwich CT - Paris
galerielatelier.com / contact@galerielatelier.com / + 1 917 340 3639 (USA)
Gallery: 520 West 23rd Street, Chelsea, New York, | 23 Lewis Street , Greenwich CT



LI RAMET 03

44" x 30" Edition of 6 | 65" x 43" Edition of 9 | 86" x 59" Edition of 3

Archival Print mounted to aluminum and laminated

Set in a Black float Frame or Museum Shadow Box

Galerie l'Atelier- Nicolas Auvray- - New York - Greenwich CT - Paris
galerielatelier.com / contact@galerielatelier.com / + 1 917 340 3639 (USA)
Gallery: 520 West 23rd Street, Chelsea, New York, | 23 Lewis Street , Greenwich CT



Jacqueline Bozon 04

44" x 30" Edition of 6 | 65" x 43" Edition of 9 | 86" x 59" Edition of 3

Archival Print mounted to aluminum and laminated

Set in a Black float Frame or Museum Shadow Box

Galerie l'Atelier- Nicolas Auvray- - New York - Greenwich CT - Paris
galerielatelier.com / contact@galerielatelier.com / + 1 917 340 3639 (USA)
Gallery: 520 West 23rd Street, Chelsea, New York, | 23 Lewis Street , Greenwich CT



Toby Mulligan o6

44" x 30" Edition of 6 | 65" x 43" Edition of 9 | 86" x 59" Edition of 3

Archival Print mounted to aluminum and laminated

Set in a Black float Frame or Museum Shadow Box

Galerie l'Atelier- Nicolas Auvray- - New York - Greenwich CT - Paris
galerielatelier.com / contact@galerielatelier.com / + 1 917 340 3639 (USA)
Gallery: 520 West 23rd Street, Chelsea, New York, | 23 Lewis Street , Greenwich CT



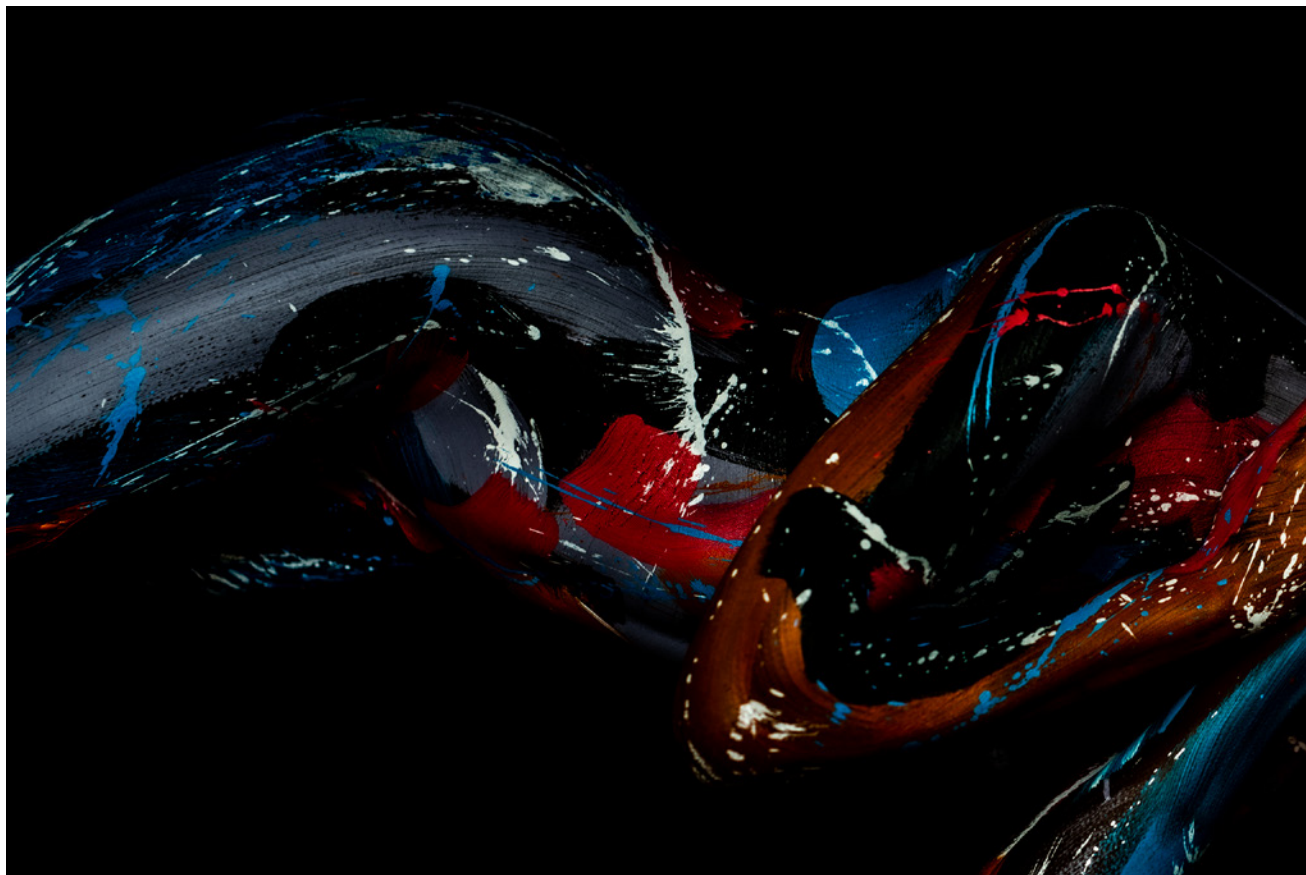
Vioetta Galera 012

44" x 30" Edition of 6 | 65" x 43" Edition of 9 | 86" x 59" Edition of 3

Archival Print mounted to aluminum and laminated

Set in a Black float Frame or Museum Shadow Box

Galerie l'Atelier- Nicolas Auvray- - New York - Greenwich CT - Paris
galerielatelier.com / contact@galerielatelier.com / + 1 917 340 3639 (USA)
Gallery: 520 West 23rd Street, Chelsea, New York, | 23 Lewis Street , Greenwich CT



TOBY MULLIGAN D2 01

30" x 44" Edition of 6 | 43" x 65" Edition of 9 | 59" x 86" Edition of 3

Archival Print mounted to aluminum and laminated
Set in a Black float Frame or Museum Shadow Box

CATALOG 2023



EDMUNDO SOLARI o6

44" x 30" Edition of 6 | 65" x 43" Edition of 9 | 86" x 59" Edition of 3

Archival Print mounted to aluminum and laminated

Set in a Black float Frame or Museum Shadow Box

Galerie l'Atelier- Nicolas Auvray- - New York - Greenwich CT - Paris
galerielatelier.com / contact@galerielatelier.com / + 1 917 340 3639 (USA)
Gallery: 520 West 23rd Street, Chelsea, New York, | 23 Lewis Street , Greenwich CT



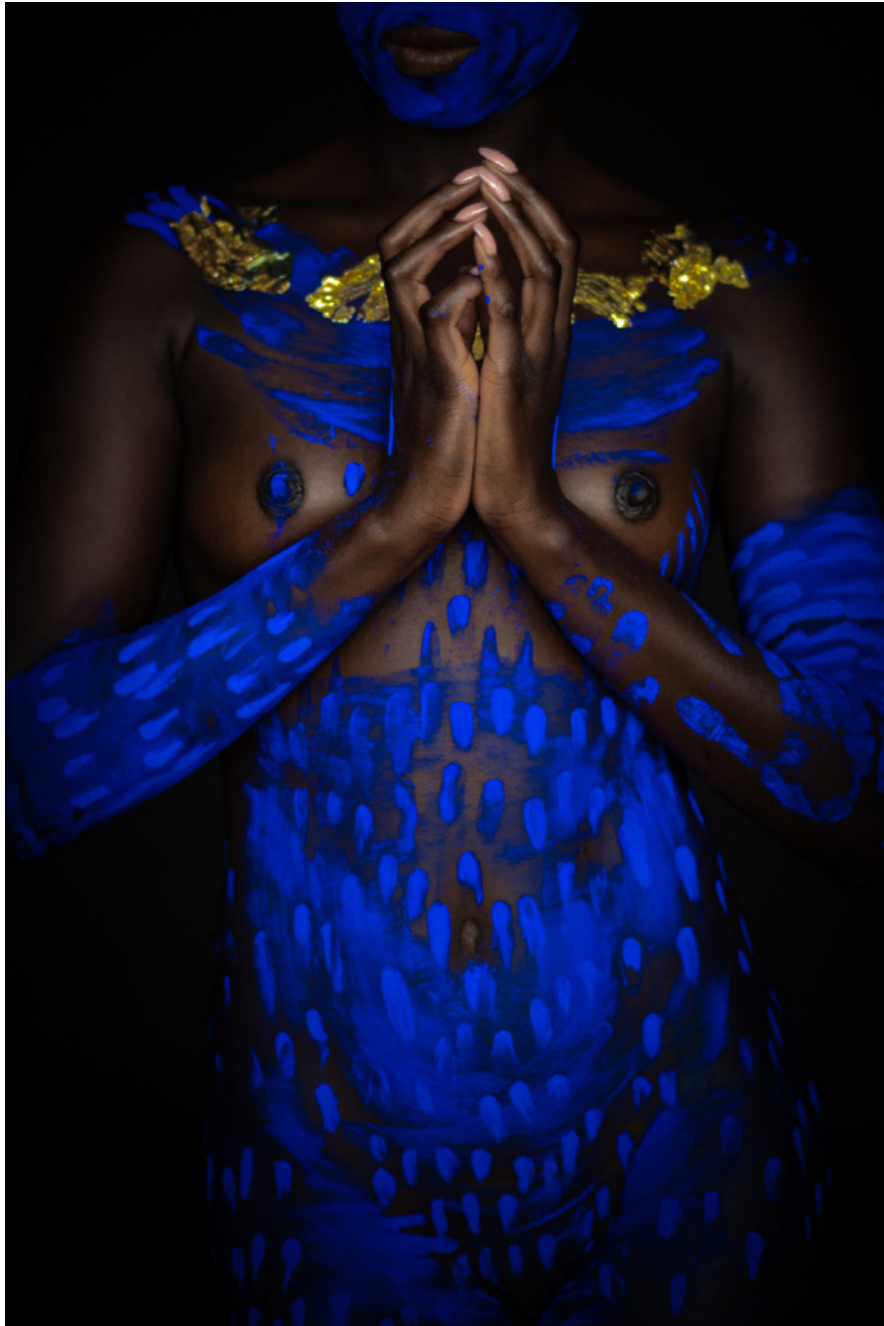
Etiyé II

44" x 30" Edition of 6 | 65" x 43" Edition of 9 | 86" x 59" Edition of 3

Archival Print mounted to aluminum and laminated

Set in a Black float Frame or Museum Shadow Box

Galerie l'Atelier- Nicolas Auvray- - New York - Greenwich CT - Paris
galerielatelier.com / contact@galerielatelier.com / + 1 917 340 3639 (USA)
Gallery: 520 West 23rd Street, Chelsea, New York, | 23 Lewis Street , Greenwich CT



ETIYÉ 12

44" x 30" Edition of 6 | 65" x 43" Edition of 9 | 86" x 59" Edition of 3

Archival Print mounted to aluminum and laminated

Set in a Black float Frame or Museum Shadow Box

Galerie l'Atelier- Nicolas Auvray- - New York - Greenwich CT - Paris
galerielatelier.com / contact@galerielatelier.com / + 1 917 340 3639 (USA)
Gallery: 520 West 23rd Street, Chelsea, New York, | 23 Lewis Street , Greenwich CT

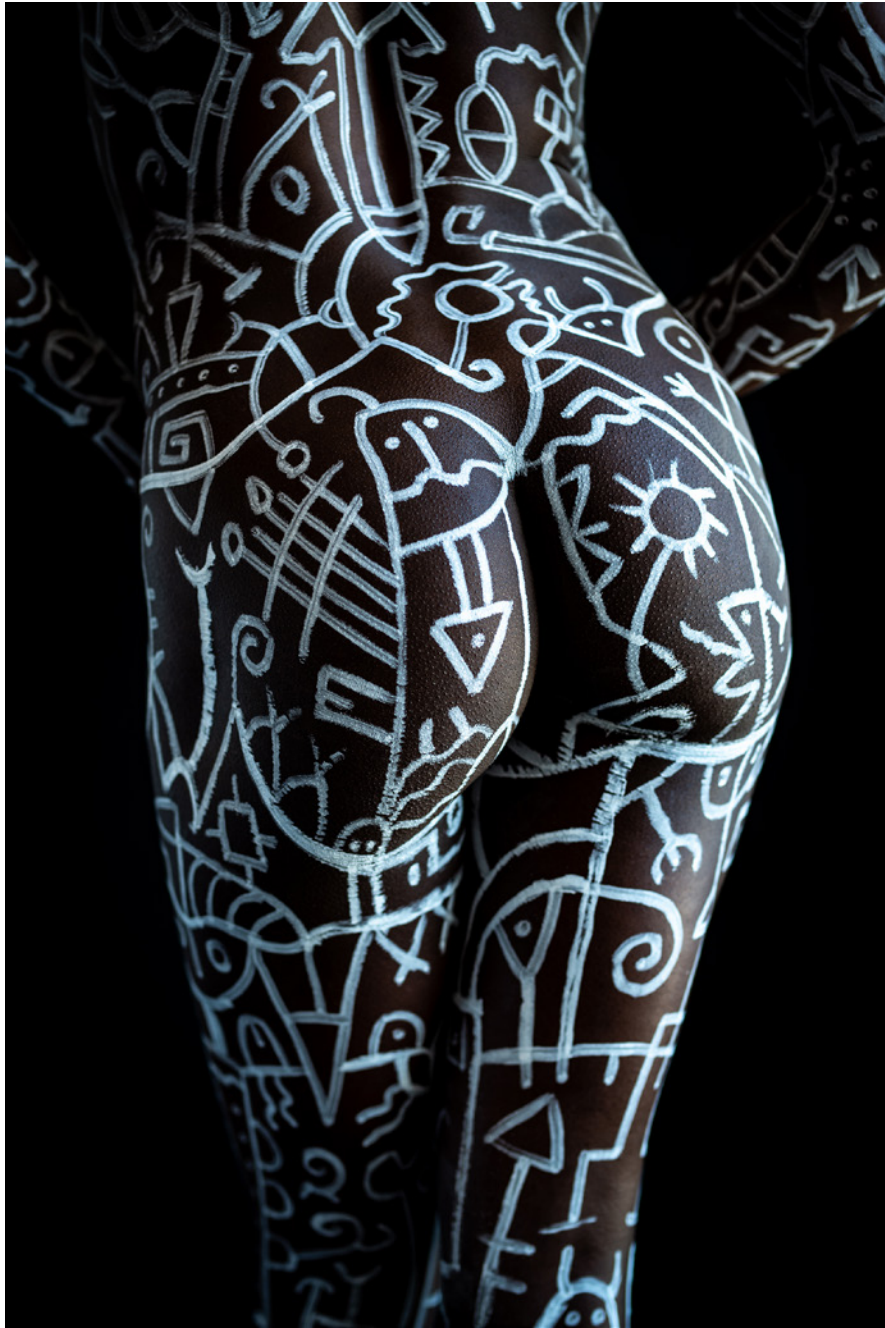


DENIS MEYERS MAURICE 03

Total Edition of 9 in 3 sizes 30" x 44" (sold out) | 43" x 65" | 59" x 86"
Last editions available

Archival Print mounted to aluminum and laminated
Set in a Black float Frame or Museum Shadow Box

Galerie l'Atelier- Nicolas Auvray- - New York - Greenwich CT - Paris
galerielatelier.com / contact@galerielatelier.com / + 1 917 340 3639 (USA)
Gallery: 520 West 23rd Street, Chelsea, New York, | 23 Lewis Street , Greenwich CT



EDMUNDO SOLARI 03

44" x 30" Edition of 6 | 65" x 43" Edition of 9 | 86" x 59" Edition of 3

Archival Print mounted to aluminum and laminated

Set in a Black float Frame or Museum Shadow Box

Galerie l'Atelier- Nicolas Auvray- - New York - Greenwich CT - Paris
galerielatelier.com / contact@galerielatelier.com / + 1 917 340 3639 (USA)
Gallery: 520 West 23rd Street, Chelsea, New York, | 23 Lewis Street , Greenwich CT



ARIGRAPHICART 01

44" x 30" Edition of 6 | 65" x 43" Edition of 9 | 86" x 59" Edition of 3

Archival Print mounted to aluminum and laminated

Set in a Black float Frame or Museum Shadow Box

Galerie l'Atelier- Nicolas Auvray- - New York - Greenwich CT - Paris
galerielatelier.com / contact@galerielatelier.com / + 1 917 340 3639 (USA)
Gallery: 520 West 23rd Street, Chelsea, New York, | 23 Lewis Street , Greenwich CT



ALVARI 01

Total Edition of 9 in 3 sizes 30" x 44" | 43" x 65" | 59" x 86"

Archival Print mounted to aluminum and laminated

Set in a Black float Frame or Museum Shadow Box

Galerie l'Atelier- Nicolas Auvray- - New York - Greenwich CT - Paris
galerielatelier.com / contact@galerielatelier.com / + 1 917 340 3639 (USA)
Gallery: 520 West 23rd Street, Chelsea, New York, | 23 Lewis Street , Greenwich CT



BRIGITTE NATAF 03

44" x 30" Edition of 6 | 65" x 43" Edition of 9 | 86" x 59" Edition of 3
Sold out edition - Artist proofs only available

Archival Print mounted to aluminum and laminated
Set in a Black float Frame or Museum Shadow Box

Galerie l'Atelier- Nicolas Auvray- - New York - Greenwich CT - Paris
galerielatelier.com / contact@galerielatelier.com / + 1 917 340 3639 (USA)
Gallery: 520 West 23rd Street, Chelsea, New York, | 23 Lewis Street , Greenwich CT



BRIGITTE NATAF 02

44" x 30" Edition of 6 | 65" x 43" Edition of 9 | 86" x 59" Edition of 3

Archival Print mounted to aluminum and laminated

Set in a Black float Frame or Museum Shadow Box

Galerie l'Atelier- Nicolas Auvray- - New York - Greenwich CT - Paris
galerielatelier.com / contact@galerielatelier.com / + 1 917 340 3639 (USA)
Gallery: 520 West 23rd Street, Chelsea, New York, | 23 Lewis Street , Greenwich CT



JAVIER ENS 03

Total Edition of 9 in 3 sizes 30" x 44" | 43" x 65" | 59" x 86"

Archival Print mounted to aluminum and laminated
Set in a Black float Frame or Museum Shadow Box

Galerie l'Atelier- Nicolas Auvray- - New York - Greenwich CT - Paris
galerielatelier.com / contact@galerielatelier.com / + 1 917 340 3639 (USA)
Gallery: 520 West 23rd Street, Chelsea, New York, | 23 Lewis Street , Greenwich CT



JACQUELINE BOZON 02

44" x 30" Edition of 6 | 65" x 43" Edition of 9 | 86" x 59" Edition of 3
Sold out edition - Artist proofs only available

Archival Print mounted to aluminum and laminated
Set in a Black float Frame or Museum Shadow Box

Galerie l'Atelier- Nicolas Auvray- - New York - Greenwich CT - Paris
galerielatelier.com / contact@galerielatelier.com / + 1 917 340 3639 (USA)
Gallery: 520 West 23rd Street, Chelsea, New York, | 23 Lewis Street , Greenwich CT

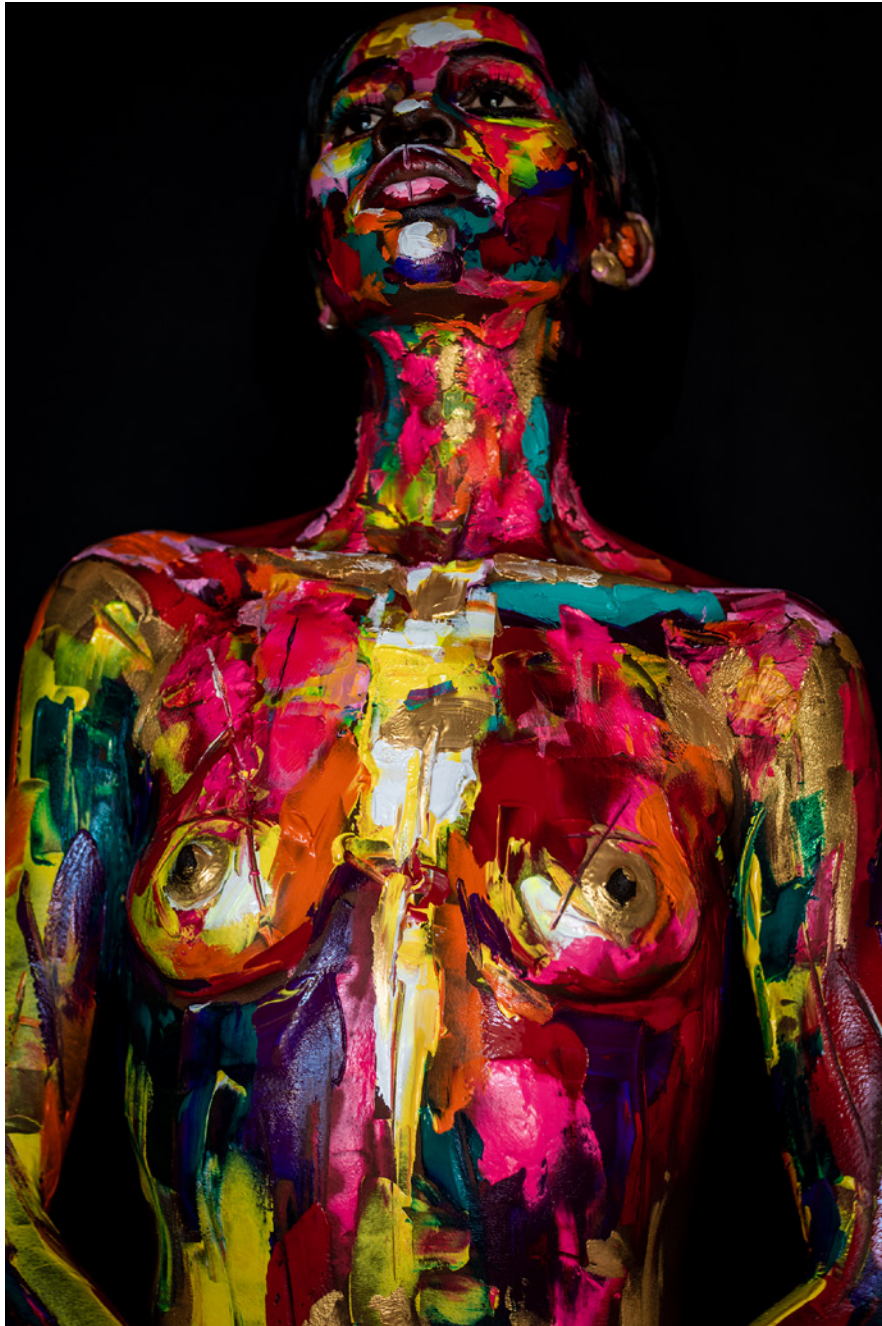


LINA REDFORD 01

44" x 30" Edition of 6 | 65" x 43" Edition of 9 | 86" x 59" Edition of 3

Archival Print mounted to aluminum and laminated
Set in a Black float Frame or Museum Shadow Box

Galerie l'Atelier- Nicolas Auvray- - New York - Greenwich CT - Paris
galerielatelier.com / contact@galerielatelier.com / + 1 917 340 3639 (USA)
Gallery: 520 West 23rd Street, Chelsea, New York, | 23 Lewis Street , Greenwich CT



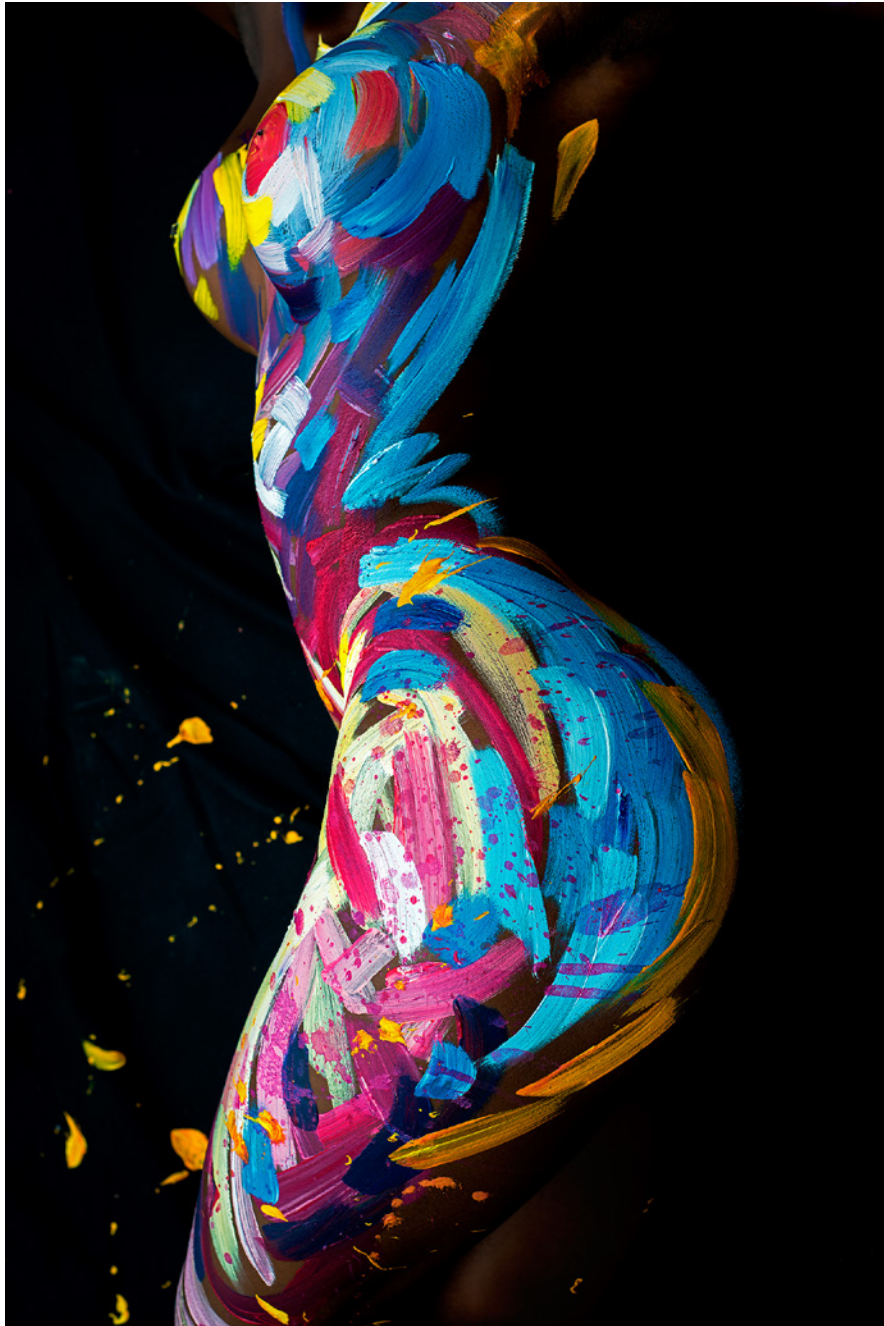
LINA REDFORD 02

44" x 30" Edition of 6 | 65" x 43" Edition of 9 | 86" x 59" Edition of 3

Archival Print mounted to aluminum and laminated

Set in a Black float Frame or Museum Shadow Box

Galerie l'Atelier- Nicolas Auvray- - New York - Greenwich CT - Paris
galerielatelier.com / contact@galerielatelier.com / + 1 917 340 3639 (USA)
Gallery: 520 West 23rd Street, Chelsea, New York, | 23 Lewis Street , Greenwich CT



JEANLOUIS BOCCAR 01

Total Edition of 9 in 3 sizes 30" x 44" (sold-out) | 43" x 65" | 59" x 86"
Last edition available

Archival Print mounted to aluminum and laminated
Set in a Black float Frame or Museum Shadow Box

Galerie l'Atelier- Nicolas Auvray- - New York - Greenwich CT - Paris
galerielatelier.com / contact@galerielatelier.com / + 1 917 340 3639 (USA)
Gallery: 520 West 23rd Street, Chelsea, New York, | 23 Lewis Street , Greenwich CT



LINA REDFORD 03

44" x 30" Edition of 6 | 65" x 43" Edition of 9 | 86" x 59" Edition of 3

Archival Print mounted to aluminum and laminated
Set in a Black float Frame or Museum Shadow Box

Galerie l'Atelier- Nicolas Auvray- - New York - Greenwich CT - Paris
galerielatelier.com / contact@galerielatelier.com / + 1 917 340 3639 (USA)
Gallery: 520 West 23rd Street, Chelsea, New York, | 23 Lewis Street , Greenwich CT



JACQUELINE BOZON 03

44" x 30" Edition of 6 | 65" x 43" Edition of 9 | 86" x 59" Edition of 3

Archival Print mounted to aluminum and laminated

Set in a Black float Frame or Museum Shadow Box

Galerie l'Atelier- Nicolas Auvray- - New York - Greenwich CT - Paris
galerielatelier.com / contact@galerielatelier.com / + 1 917 340 3639 (USA)
Gallery: 520 West 23rd Street, Chelsea, New York, | 23 Lewis Street , Greenwich CT



NUTSY 01

44" x 30" Edition of 6 (Sold out) AP only

65" x 43" Edition of 9 | 86" x 59" Edition of 3

Archival Print mounted to aluminum and laminated
Set in a Black float Frame or Museum Shadow Box

Galerie l'Atelier- Nicolas Auvray- - New York - Greenwich CT - Paris
galerielatelier.com / contact@galerielatelier.com / + 1 917 340 3639 (USA)
Gallery: 520 West 23rd Street, Chelsea, New York, | 23 Lewis Street , Greenwich CT



NUTSY 02

44" x 30" Edition of 6 | 65" x 43" Edition of 9 | 86" x 59" Edition of 3

Archival Print mounted to aluminum and laminated

Set in a Black float Frame or Museum Shadow Box

Galerie l'Atelier- Nicolas Auvray- - New York - Greenwich CT - Paris
galerielatelier.com / contact@galerielatelier.com / + 1 917 340 3639 (USA)
Gallery: 520 West 23rd Street, Chelsea, New York, | 23 Lewis Street , Greenwich CT



MATHILDE LACHAL 01

Total Edition of 9 in 3 sizes 30" x 44" (Sold out) | 43" x 65" | 59" x 86"
Last few editions available only

Archival Print mounted to aluminum and laminated
Set in a Black float Frame or Museum Shadow Box

Galerie l'Atelier- Nicolas Auvray- - New York - Greenwich CT - Paris
galerielatelier.com / contact@galerielatelier.com / + 1 917 340 3639 (USA)
Gallery: 520 West 23rd Street, Chelsea, New York, | 23 Lewis Street , Greenwich CT



MIMI LOVE ART 02

44" x 30" Edition of 6 | 65" x 43" Edition of 9 | 86" x 59" Edition of 3

Archival Print mounted to aluminum and laminated
Set in a Black float Frame or Museum Shadow Box

Galerie l'Atelier- Nicolas Auvray- - New York - Greenwich CT - Paris
galerielatelier.com / contact@galerielatelier.com / + 1 917 340 3639 (USA)
Gallery: 520 West 23rd Street, Chelsea, New York, | 23 Lewis Street , Greenwich CT



TOM FRANTZE 02

44" x 30" Edition of 6 | 65" x 43" Edition of 9 | 86" x 59" Edition of 3

Archival Print mounted to aluminum and laminated

Set in a Black float Frame or Museum Shadow Box

Galerie l'Atelier- Nicolas Auvray- - New York - Greenwich CT - Paris
galerielatelier.com / contact@galerielatelier.com / + 1 917 340 3639 (USA)
Gallery: 520 West 23rd Street, Chelsea, New York, | 23 Lewis Street , Greenwich CT



PATRICIA SARTORI 08

44" x 30" Edition of 6 | 65" x 43" Edition of 9 | 86" x 59" Edition of 3

Archival Print mounted to aluminum and laminated

Set in a Black float Frame or Museum Shadow Box

Galerie l'Atelier- Nicolas Auvray- - New York - Greenwich CT - Paris
galerielatelier.com / contact@galerielatelier.com / + 1 917 340 3639 (USA)
Gallery: 520 West 23rd Street, Chelsea, New York, | 23 Lewis Street , Greenwich CT



PATRICIA SARTORI 09

44" x 30" Edition of 6 | 65" x 43" Edition of 9 | 86" x 59" Edition of 3

Archival Print mounted to aluminum and laminated
Set in a Black float Frame or Museum Shadow Box

Galerie l'Atelier- Nicolas Auvray- - New York - Greenwich CT - Paris
galerielatelier.com / contact@galerielatelier.com / + 1 917 340 3639 (USA)
Gallery: 520 West 23rd Street, Chelsea, New York, | 23 Lewis Street , Greenwich CT



LAURA ALUNNI 02

44" x 30" Edition of 6 | 65" x 43" Edition of 9 | 86" x 59" Edition of 3

Archival Print mounted to aluminum and laminated
Set in a Black float Frame or Museum Shadow Box

Galerie l'Atelier- Nicolas Auvray- - New York - Greenwich CT - Paris
galerielatelier.com / contact@galerielatelier.com / + 1 917 340 3639 (USA)
Gallery: 520 West 23rd Street, Chelsea, New York, | 23 Lewis Street , Greenwich CT



JAVIER ENS 04

Total Edition of 9 in 3 sizes 30" x 44" | 43" x 65" | 59" x 86"

Archival Print mounted to aluminum and laminated
Set in a Black float Frame or Museum Shadow Box

Galerie l'Atelier- Nicolas Auvray- - New York - Greenwich CT - Paris
galerielatelier.com / contact@galerielatelier.com / + 1 917 340 3639 (USA)
Gallery: 520 West 23rd Street, Chelsea, New York, | 23 Lewis Street , Greenwich CT



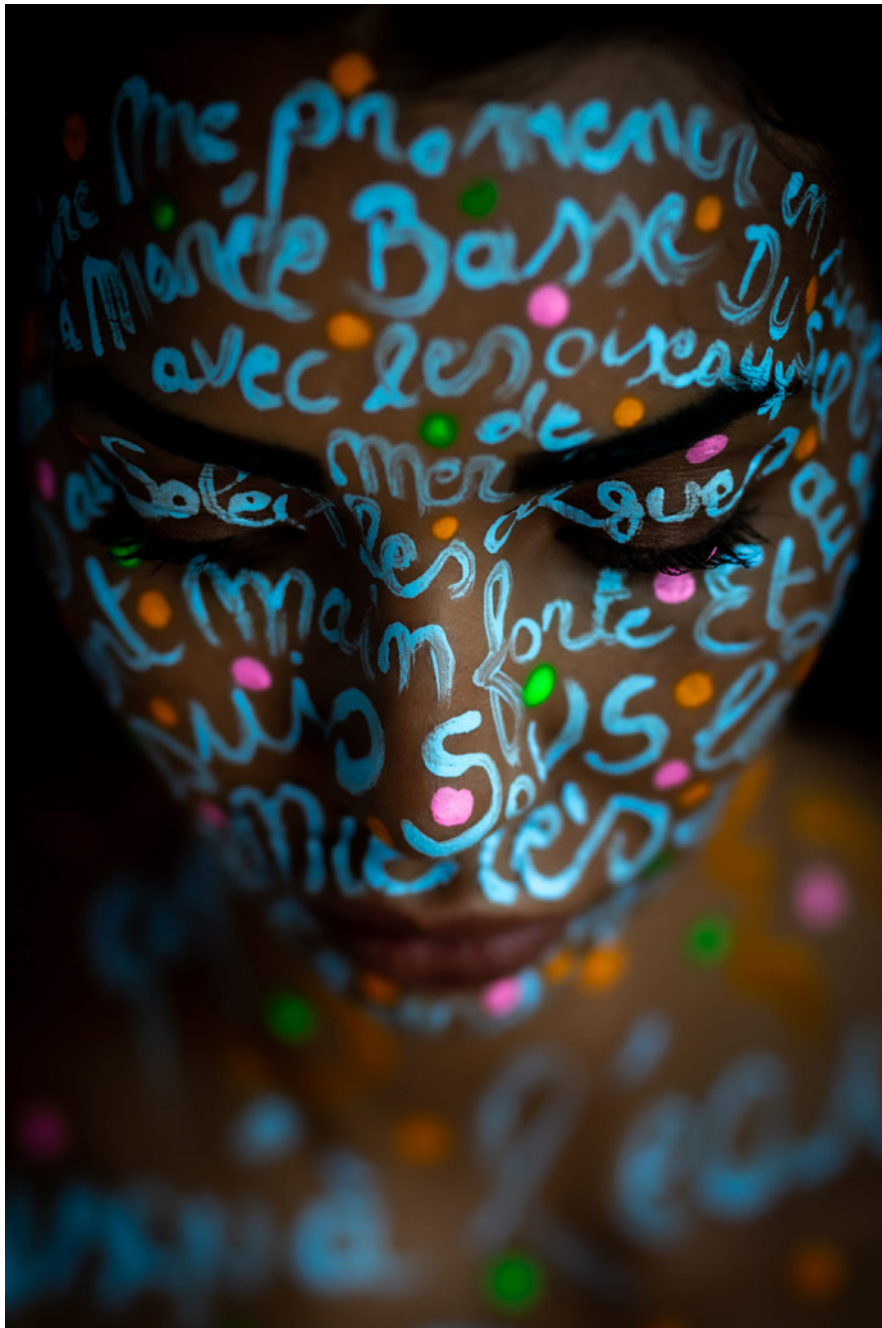
NEW WORK UNTITLED

44" x 30" Edition of 6 | 65" x 43" Edition of 9 | 86" x 59" Edition of 3

Archival Print mounted to aluminum and laminated

Set in a Black float Frame or Museum Shadow Box

Galerie l'Atelier- Nicolas Auvray- - New York - Greenwich CT - Paris
galerielatelier.com / contact@galerielatelier.com / + 1 917 340 3639 (USA)
Gallery: 520 West 23rd Street, Chelsea, New York, | 23 Lewis Street , Greenwich CT



Christophe de Fierlant 05

44" x 30" Edition of 6 | 65" x 43" Edition of 9 | 86" x 59" Edition of 3

Archival Print mounted to aluminum and laminated

Set in a Black float Frame or Museum Shadow Box

Galerie l'Atelier- Nicolas Auvray- - New York - Greenwich CT - Paris
galerielatelier.com / contact@galerielatelier.com / + 1 917 340 3639 (USA)
Gallery: 520 West 23rd Street, Chelsea, New York, | 23 Lewis Street , Greenwich CT



Christophe de Fierlant o6

44" x 30" Edition of 6 | 65" x 43" Edition of 9 | 86" x 59" Edition of 3

Archival Print mounted to aluminum and laminated

Set in a Black float Frame or Museum Shadow Box

Galerie l'Atelier- Nicolas Auvray- - New York - Greenwich CT - Paris
galerielatelier.com / contact@galerielatelier.com / + 1 917 340 3639 (USA)
Gallery: 520 West 23rd Street, Chelsea, New York, | 23 Lewis Street , Greenwich CT



Christophe de Fierlant 07

44" x 30" Edition of 6 | 65" x 43" Edition of 9 | 86" x 59" Edition of 3

Archival Print mounted to aluminum and laminated

Set in a Black float Frame or Museum Shadow Box

Galerie l'Atelier- Nicolas Auvray- - New York - Greenwich CT - Paris
galerielatelier.com / contact@galerielatelier.com / + 1 917 340 3639 (USA)
Gallery: 520 West 23rd Street, Chelsea, New York, | 23 Lewis Street , Greenwich CT



Christophe de Fierlant 04

30" x 44" Edition of 6 | 43" x 65" Edition of 9 | 59" x 86" Edition of 3

Archival Print mounted to aluminum and laminated
Set in a Black float Frame or Museum Shadow Box



ELLIN POLLACK 02

Total Edition of 9 in 3 sizes 30" x 44" | 43" x 65" | 59" x 86"

Archival Print mounted to aluminum and laminated
Set in a Black float Frame or Museum Shadow Box



ELLIN POLLACK 03

Total Edition of 9 in 3 sizes 30" x 44" | 43" x 65" | 59" x 86"

Archival Print mounted to aluminum and laminated
Set in a Black float Frame or Museum Shadow Box



ELLIN POLLACK 04

Total Edition of 9 in 3 sizes 30" x 44" | 43" x 65" | 59" x 86"

Archival Print mounted to aluminum and laminated
Set in a Black float Frame or Museum Shadow Box



KRASIMIR BOSHEV 04

30" x 44" Edition of 6 | 43" x 65" Edition of 9 | 59" x 86" Edition of 3

Archival Print mounted to aluminum and laminated
Set in a Black float Frame or Museum Shadow Box



Gael Froget 04

30" x 44" Edition of 6 | 43" x 65" Edition of 9 | 59" x 86" Edition of 3

Archival Print mounted to aluminum and laminated
Set in a Black float Frame or Museum Shadow Box



EVART 01

30" x 44" Edition of 6 | 43" x 65" Edition of 9 | 59" x 86" Edition of 3

Archival Print mounted to aluminum and laminated
Set in a Black float Frame or Museum Shadow Box



#####

30" x 44" Edition of 6 | 43" x 65" Edition of 9 | 59" x 86" Edition of 3

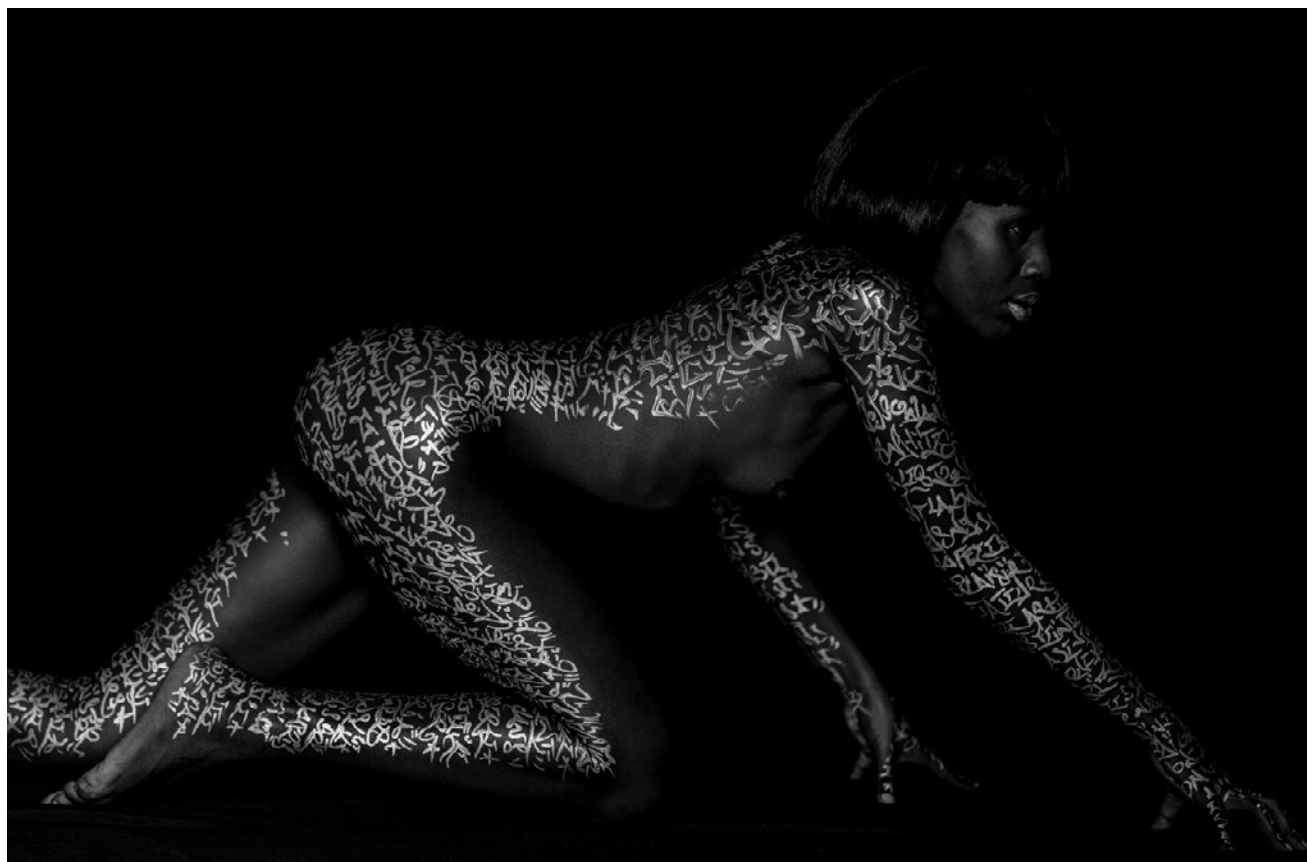
Archival Print mounted to aluminum and laminated
Set in a Black float Frame or Museum Shadow Box



DENIS MEYERS S01

Total Edition of 9 in 3 sizes 30" x 44" | 43" x 65" | 59" x 86"

Archival Print mounted to aluminum and laminated
Set in a Black float Frame or Museum Shadow Box



NUTSY 05

30" x 44" Edition of 6 | 43" x 65" Edition of 9 | 59" x 86" Edition of 3

Archival Print mounted to aluminum and laminated
Set in a Black float Frame or Museum Shadow Box



MARIE SULAC 07

30" x 44" Edition of 6 | 43" x 65" Edition of 9 | 59" x 86" Edition of 3

Archival Print mounted to aluminum and laminated
Set in a Black float Frame or Museum Shadow Box



HELEN ROETEN 01

30" x 44" Edition of 6 | 43" x 65" Edition of 9 | 59" x 86" Edition of 3

Archival Print mounted to aluminum and laminated
Set in a Black float Frame or Museum Shadow Box



PATRICIA SARTORI 13

30" x 44" Edition of 6 | 43" x 65" Edition of 9 | 59" x 86" Edition of 3

Archival Print mounted to aluminum and laminated
Set in a Black float Frame or Museum Shadow Box

A presentation of Galerie l'Atelier

Galerie l'Atelier works with a selection of both established and emerging contemporary artists who we present from our New York and Greenwich CT locations as well as through art fairs. With roots in photography, we have expanded to include sculpture, painting and mixed media. We are particularly interested in artists who look to cross the boundaries of their medium and look for alternative or innovative uses of their traditional techniques. Galerie l'Atelier highlights artists for whom the physical relationship to the medium is central to their approach, and we are passionate about the tangible and material aspect of the media itself.

For instance, in the photographic area, in addition to hand printed silver gelatin prints done in the dark-room, Dominique Lacloue associates analog photography and sculpture by printing photographs on giant natural plants and using re-constructed silver negative from several views. Claire Gilliam mixes her self-analysis of the body and her passion for the Verb and writings through her practices of Photograms, etchings and drawings.

We admire that the relationship between the light and the medium is essential. Seeking to represent the dynamic range of photographic creation today, from conceptual photography to the re-invented traditional approach is just one of our interest and goals. We also look for connections with light, earth, minerals, air, water or heat and represent work of the highest quality, looking for artists with strong narrative of their personal vision in their photographs, either autobiographically as with Jehsong Baak's "one last goodbye" or by a study of their own social environment, as we observe in Wendy Paton's "Visage de Nuit" or with the cosmologic research found in the paintings of Benjamin Dray. With Cat Sirot and Eric Ceccarini, we look into human communication, the intimate, and the human body as a conveyor of emotions.

Through our international travels for exhibitions, festivals and art fairs as well as our involvement in the NY photographic community at the International Center of Photography NY, we have aligned with fellow artists around the globe and engaged peers with whom we feel a strong connection via their work, subjects and approach. Through this approach we represent an array of both established and emerging artists with established careers overseas who we are proud to introduce to the American Public.

Galerie l'Atelier provides an active working platform for artists and a genuine opportunity to showcase their work in prestigious locations, affording them access to a select clientele from art fairs, private and public events, corporate clients, interior designers, art consultants in addition to private collectors. One common thread links all of our artists is their relationship with primary elements.

www.galerielatelier.com

Document, Texts, images ©Galerie l'Atelier 2021
All Photographs all rights reserved



Document, logo, photographs and Texts ©Galerie l'Atelier 2021
Photographs ©Eric Ceccarini 2021