



Galerie l'Atelier

**ERIC
CECCARINI**

AMNIOS

Document, images and Text ©Galerie l'Atelier 2022
Photographs ©Eric Ceccarini
All right reserved

Galerie l'Atelier
New York - Paris- Greenwich
www.galerielatelier.com / contact@galerielatelier.com
+ 1 917 340 3639

520 West 23rd Street, New York, NY, 10011
23 Lewis Street, Greenwich, CT, 06830

ERIC CECCARINI

AMNIOS

Eric is a Belgian artist born in 1965. He gained a degree in photography from infac, brussels in 1987. Since then he has been a fashion photographer working with many of the top houses. Chopard, Elle, Marie-Claire, L'Oréal, Levi's, Coca Cola, Virgin, Saab, Delvaux, Lowe Lintas and Ogilvy are some of his clients.

Among other distinctions, his photography for the Saab cabrio 9-3 campaign was awarded the Silver Lion at the Cannes International Advertising Festival. Eric is set apart from many of his colleagues by his way of shunning technical artifice and working in natural light. This results in soft, velvety, almost painterly images. In his artistic works, he captures women's essence and soul, transcending mere physical representation.

In Eric's "AMNIOS" series of soul portraits the models appear in suspended animation, as if they were about to be born, and full of hidden secrets. This represents a new conceptual departure for Eric, who began as a fashion photographer; moving on to classic artistic nudes, now showing us the nude in the ethereal form. These forms are certainly beautiful, yet a membrane separates them from us: is it to hide, or protect? In person, these works are monumental in scale, adding to their sense of restrained power.

Document and Texts ©Galerie l'Atelier 2022

All Photographs ©Eric Ceccarini

All right reserved

Galerie l'Atelier - New York - Greenwich CT - Paris

galerielatelier.com / contact@galerielatelier.com / + 1 917 340 3639 (USA)

Gallery: 520 West 23rd Street, Chelsea, New York, | 23 Lewis Street, Greenwich CT

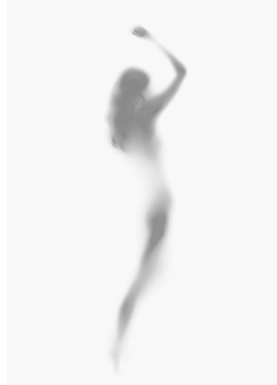
Index



Maelise



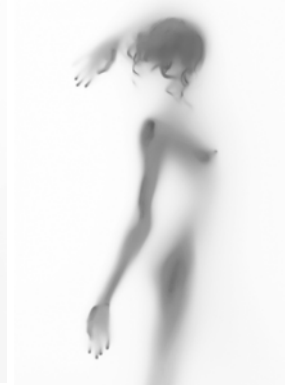
Red Claudine



Tess



Anthea's Hands



Fifth Stretch



Limits of Aminos



Maddy's Hair



Floating 01



Sisters



The Three Sisters and the Mother



MAELISE

49" x 78.75" / 125 x 200 cm | Edition of 9

Archival Print mounted to aluminum and laminated
Set in a White float Frame or Museum Shadow Box

Galerie l'Atelier | Fremin Gallery - New York - Greenwich CT - Paris
galerielatelier.com / contact@galerielatelier.com / + 1 917 340 3639 (USA)
Gallery: 520 West 23rd Street, Chelsea, New York, | 23 Lewis Street , Greenwich CT



CLAUDINE

49" x 78.75" / 125 x 200 cm | Edition of 9

Archival Print mounted to aluminum and laminated
Set in a White float Frame or Museum Shadow Box

Galerie l'Atelier | Fremin Gallery - New York - Greenwich CT - Paris
galerielatelier.com / contact@galerielatelier.com / + 1 917 340 3639 (USA)
Gallery: 520 West 23rd Street, Chelsea, New York, | 23 Lewis Street , Greenwich CT



TESS

49" x 78.75" / 125 x 200 cm | Edition of 9

Archival Print mounted to aluminum and laminated

Set in a White float Frame or Museum Shadow Box

Galerie l'Atelier | Fremin Gallery - New York - Greenwich CT - Paris
galerielatelier.com / contact@galerielatelier.com / + 1 917 340 3639 (USA)
Gallery: 520 West 23rd Street, Chelsea, New York, | 23 Lewis Street , Greenwich CT



ATHENA'S HANDS

49" x 78.75" / 125 x 200 cm | Edition of 9

Archival Print mounted to aluminum and laminated
Set in a White float Frame or Museum Shadow Box

Galerie l'Atelier | Fremin Gallery - New York - Greenwich CT - Paris
galerielatelier.com / contact@galerielatelier.com / + 1 917 340 3639 (USA)
Gallery: 520 West 23rd Street, Chelsea, New York, | 23 Lewis Street, Greenwich CT



FIFTH STRETCH

49" x 78.75" / 125 x 200 cm | Edition of 9

Archival Print mounted to aluminum and laminated
Set in a White float Frame or Museum Shadow Box

Galerie l'Atelier | Fremin Gallery - New York - Greenwich CT - Paris
galerielatelier.com / contact@galerielatelier.com / + 1 917 340 3639 (USA)
Gallery: 520 West 23rd Street, Chelsea, New York, | 23 Lewis Street , Greenwich CT



LIMITS OF Aminos

49" x 78.75" / 125 x 200 cm | Edition of 9

Archival Print mounted to aluminum and laminated
Set in a White float Frame or Museum Shadow Box

Galerie l'Atelier | Fremin Gallery - New York - Greenwich CT - Paris
galerielatelier.com / contact@galerielatelier.com / + 1 917 340 3639 (USA)
Gallery: 520 West 23rd Street, Chelsea, New York, | 23 Lewis Street, Greenwich CT



MADDY'S HAIR

49" x 78.75" / 125 x 200 cm | Edition of 9

Archival Print mounted to aluminum and laminated
Set in a White float Frame or Museum Shadow Box

Galerie l'Atelier | Fremin Gallery - New York - Greenwich CT - Paris
galerielatelier.com / contact@galerielatelier.com / + 1 917 340 3639 (USA)
Gallery: 520 West 23rd Street, Chelsea, New York, | 23 Lewis Street, Greenwich CT



FLOATING 01

59" x 98" / 150 x 250 cm | Last Author Print

Archival Print mounted to aluminum and laminated
Set in a White float Frame or Museum Shadow Box



SISTERS

59" x 98" / 150 x 250 cm | Edition of 9

Archival Print mounted to aluminum and laminated
Set in a White float Frame or Museum Shadow Box



THE THREE SISTERS AND THE MOTHER

59" x 98" / 150 x 250 cm | Edition of 9

Archival Print mounted to aluminum and laminated
Set in a White float Frame or Museum Shadow Box

A Presentation of Galerie l'Atelier

Galerie l'Atelier works with a selection of both established and emerging contemporary artists who we present from our New York and Greenwich CT locations as well as through art fairs. With roots in photography, we have expanded to include sculpture, painting and mixed media. We are particularly interested in artists who look to cross the boundaries of their medium and look for alternative or innovative uses of their traditional techniques. Galerie l'Atelier highlights artists for whom the physical relationship to the medium is central to their approach, and we are passionate about the tangible and material aspect of the media itself.

For instance, in the photographic area, in addition to hand printed silver gelatin prints done in the darkroom, Dominique Lacroche associates analog photography and sculpture by printing photographs on giant natural plants and using re-constructed silver negative from several views. Claire Gilliam mixes her self-analysis of the body and her passion for the Verb and writings through her practices of Photograms, etchings and drawings.

We admire that the relationship between the light and the medium is essential. Seeking to represent the dynamic range of photographic creation today, from conceptual photography to the re-invented traditional approach is just one of our interest and goals. We also look for connections with light, earth, minerals, air, water or heat and represent work of the highest quality, looking for artists with strong narrative of their personal vision in their photographs, either autobiographically as with Jehsong Baak's "one last goodbye" or by a study of their own social environment, as we observe in Wendy Paton's "Visage de Nuit" or with the cosmologic research found in the paintings of Benjamin Dray. With Cat Sirot and Eric Ceccarini, we look into human communication, the intimate, and the human body as a conveyor of emotions.

Through our international travels for exhibitions, festivals and art fairs as well as well as our involvement in the NY photographic community at the International Center of Photography NY, we have aligned with fellow artists around the globe and engaged peers with whom we feel a strong connection via their work, subjects and approach. Through this approach we represent an array of both established and emerging artists with established careers overseas who we are proud to introduce to the American Public.

Galerie l'Atelier provides an active working platform for artists and a genuine opportunity to showcase their work in prestigious locations, affording them access to a select clientele from art fairs, private and public events, corporate clients, interior designers, art consultants in addition to private collectors. One common thread links all of our artists is their relationship with primary elements.

www.galerielatelier.com

Document, Texts, images ©Galerie l'Atelier 2022

All Photographs all rights reserved

Galerie l'Atelier - New York - Greenwich CT - Paris

galerielatelier.com / contact@galerielatelier.com / + 1 917 340 3639 (USA)

Gallery: 520 West 23rd Street, Chelsea, New York, | 23 Lewis Street, Greenwich CT



Document, logo, photographs and Texts ©Galerie l'Atelier 2022
Photographs ©Eric Ceccarini 2022